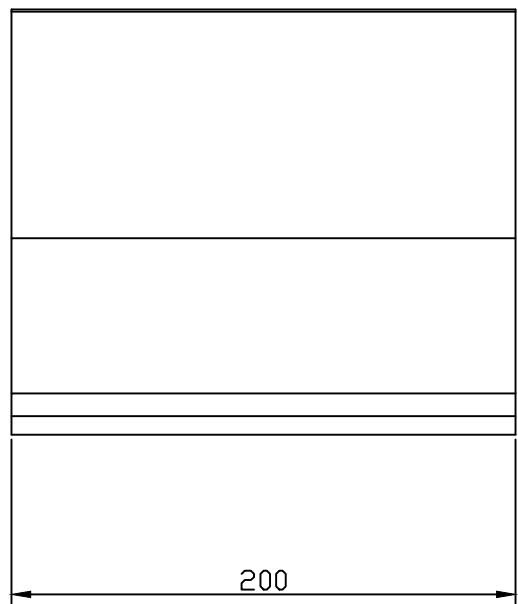
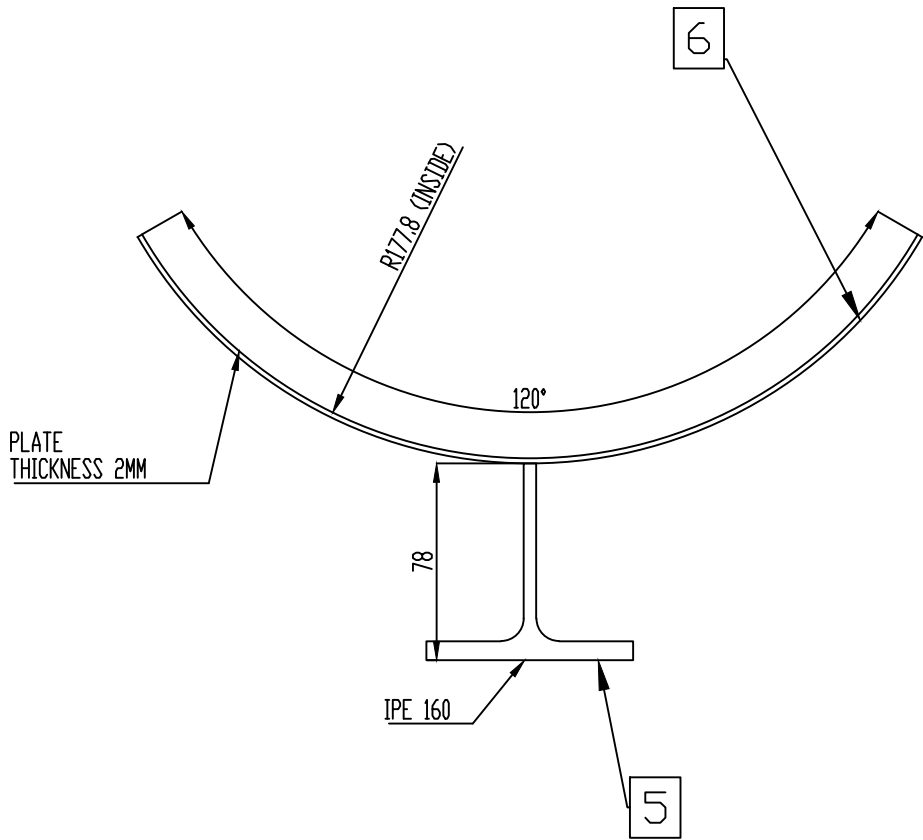
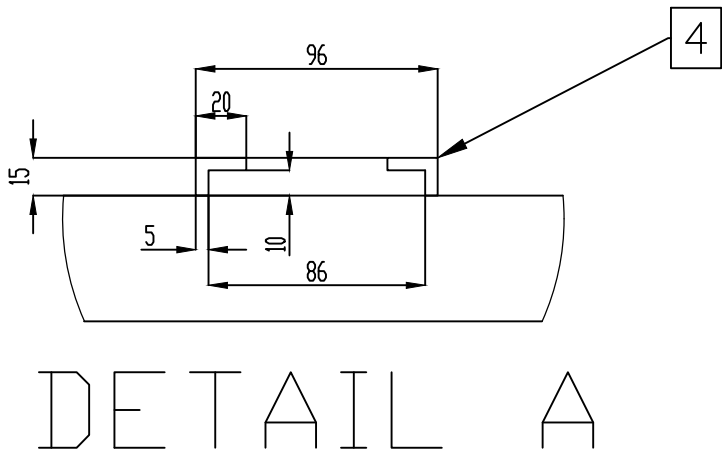
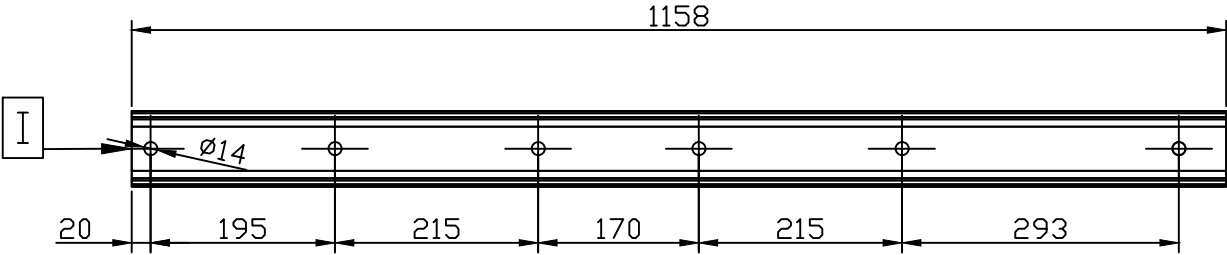
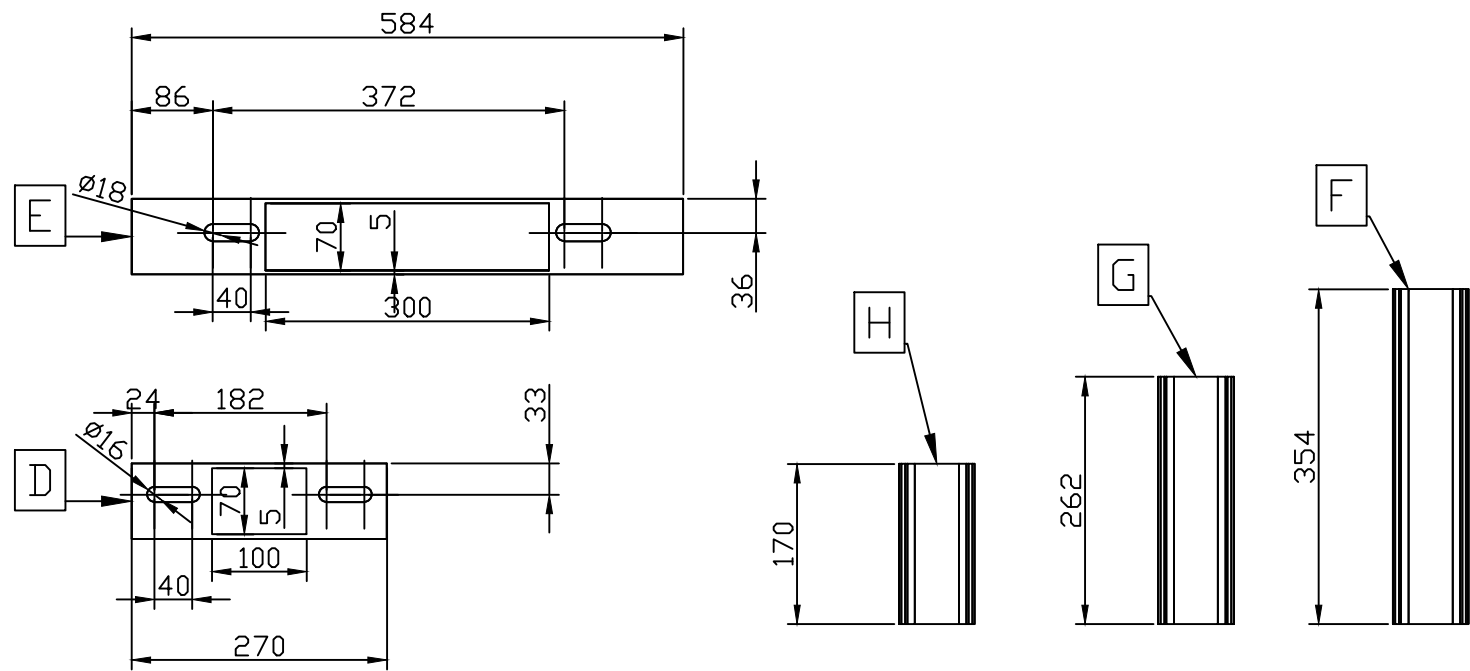
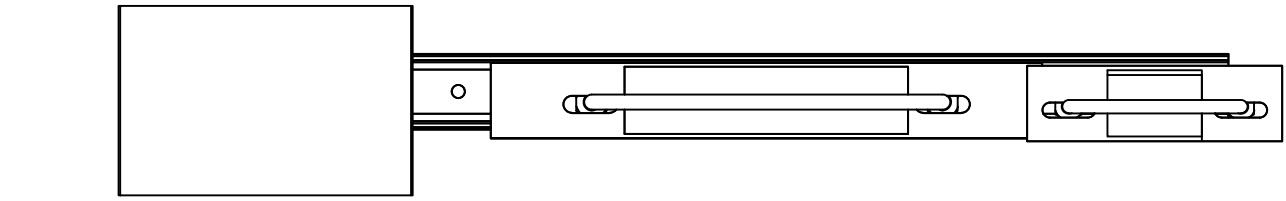
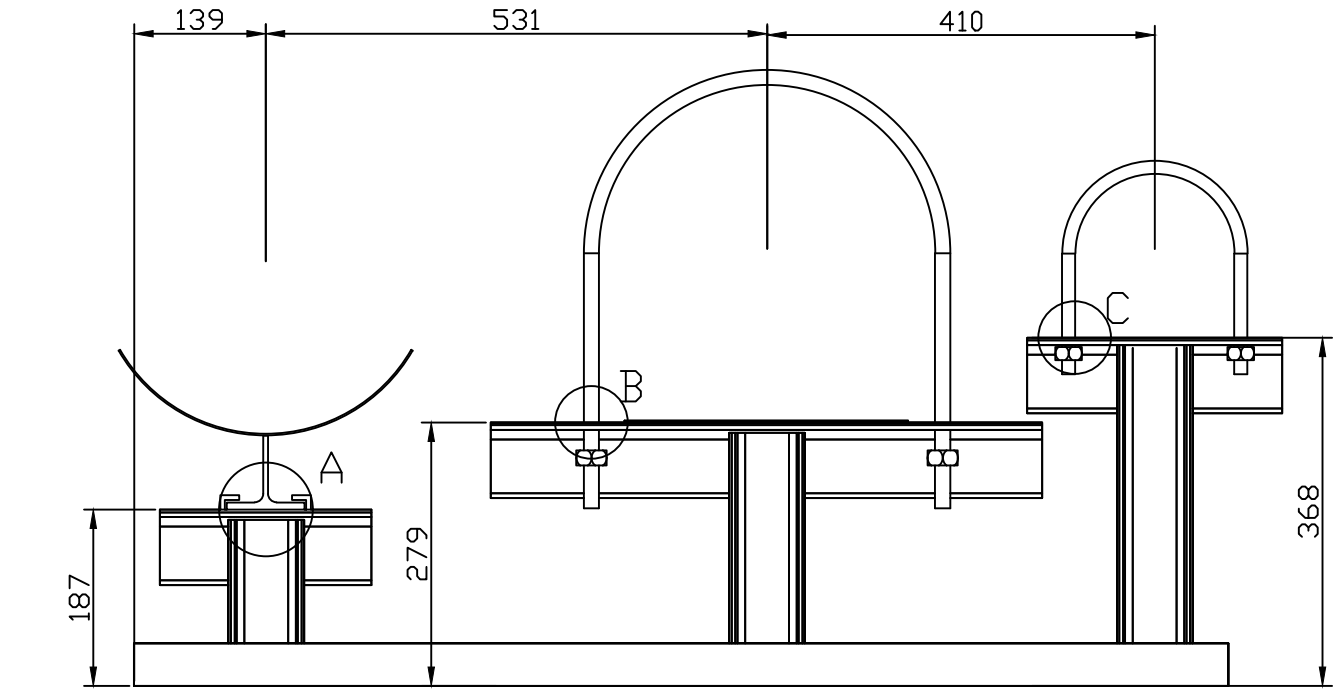
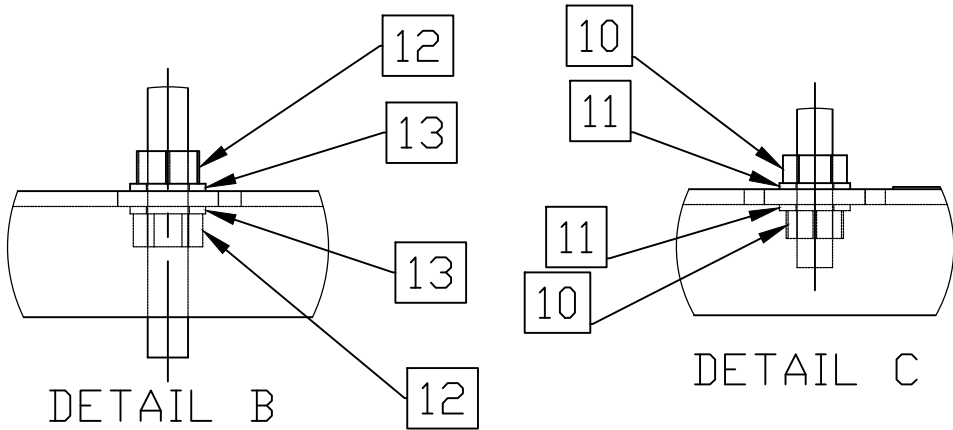


| BILL OF MATERIALS | | | |
|-------------------|-----------|--|-----------|
| ID | QT (Ud/M) | DESCRIPTION | MATERIAL |
| 1 | 0.854 | L 80x80x8 | S235JR |
| 2 | 1.944 | UPN 80 | S235JR |
| 3 | 6 | ANCHOR BOLT M12x120 8.8 | 8.8 |
| 4 | 0.2 | S235JR L PLATE 15x20x5 | S235JR |
| 5 | 0.2 | IPE 160 | S235JR |
| 6 | 0.2 | AISI316L PLATE L=375mm (Thickness 2mm) | S235JR |
| 8 | 1 | U-BOLT DN150 M14 DIN 3570 with plastic cover | STEEL |
| 9 | 1 | U-BOLT DN350 M16 DIN 3570 with plastic cover | STEEL |
| 10 | 4 | NUT M14 8 DIN934 | 8 |
| 11 | 4 | FLAT WASHER M14 St DIN125 | St |
| 12 | 4 | NUT M16 8 DIN934 | 8 |
| 13 | 4 | FLAT WASHER M16 St DIN125 | St |
| 14 | 1 | AISI316L PLATE 300x70x1 | AISI 316L |
| 15 | 1 | AISI316L PLATE 100x70x1 | AISI 316L |

QTY: 1 UNIT



| UNSPECIFIED WELDS: | | | |
|---|-------|---------------------------|-----------------------|
| JOINT WITHOUT BEVEL | 40% | JOINT WITH BEVEL | 70% 70% 50-100 50-100 |
| Note: Percentage (%) of the weld in relation to the smallest section of the weld joint. | | | |
| Non-individual tolerances according to DIN 7168. | | Drawn 3D: | |
| | 10-50 | 50-120 | 120-400 |
| | ±0,5° | ±0,33° | ±0,16° |
| | 6-30 | 30-120 | 120-315 |
| | ±0,2 | ±0,3 | ±0,5 |
| Oxygen Route | | Rev. | |
| TMT (FVRB-2,7-25) | | N° Drawing: | |
| | | 2558-331X-TMT-ESR10-SUP14 | |
| | | Scale 1:40 | |
| | | Weight (kg) | |
| | | Sheet 1 of 1 | |
| | | Format A2 | |